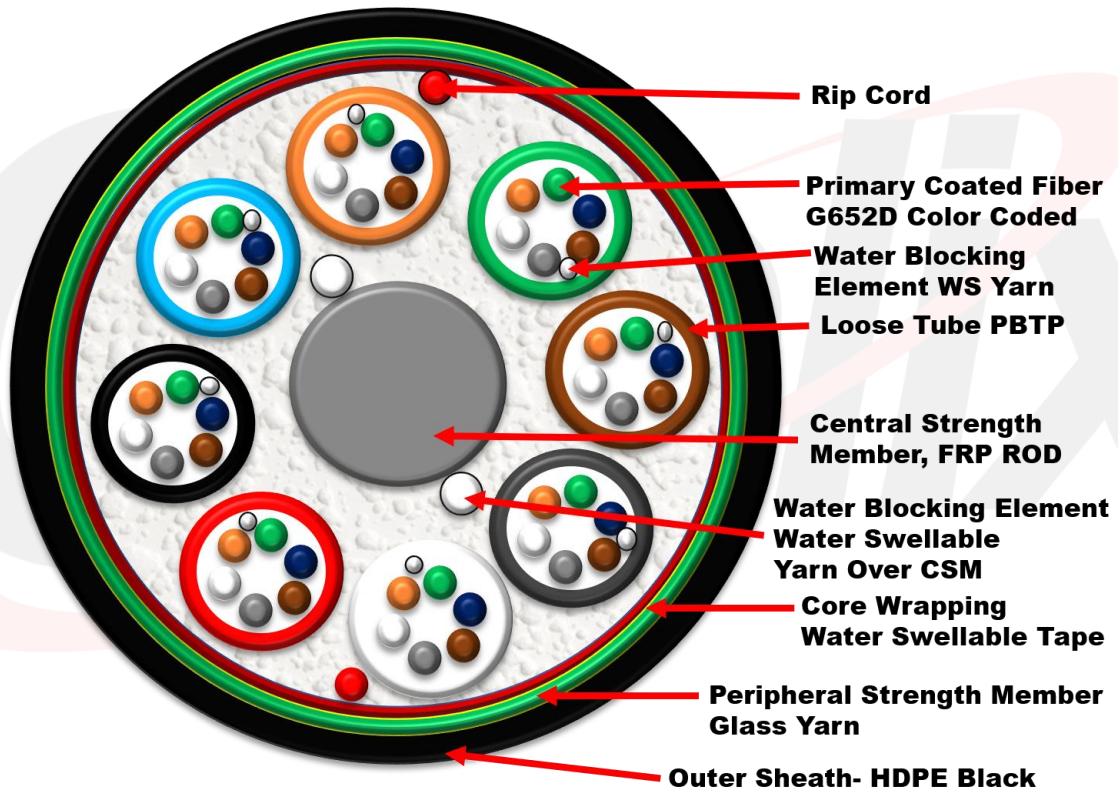


Optical Fiber Cable dielectric anti-rodent, Aerial (Lashed) non Armored Multi-Tube Cable, Dry with FRP central strength member for Outdoor Application –
12F / 24F / 48F / 96F / 144F



DUCT optic cable containing LWP-SMF in full compliance with ITU-T G 652D. The offered cables are fully compliant to the relevant IEC specifications



OCCMGY-09G652XXSJ-IN

SINGLE SHEATH, DUCT, MULTI LOOSE TUBE OPTICAL CABLE

OPTICAL PROPERTIES

Norma	ITU-T G.652D	
Fiber yarn count	12F / 24F / 48F/ 96F/ 144F	
Attenuation coefficient	1310nm	< 0.36 dB/Km (*1)
	1550nm	< 0.23 dB/Km (*1)
	1625nm	< 0.22 dB/Km (*1)
Point discontinuity	≤ 0.05 dB (*1)	
Diameter of modal field	Wavelength: 1310nm, 1550nm, 1625nm Nominal range: 9.2mm Tolerance: ± 0.4mm	
Cladding diameter (nominal)	125 mm ± 0,7 mm	
Primary coating diameter	245 ± 10 um	
Proof test level	100 kpsi (=0.69 Gpa), 1%	
Core concentricity error	Máximo: 0,5 mm	
Non-circularity of the Cladding	Máximo: 1,0%	
Cut-off wavelength	Máximo: 1260 nm	
Chromatic dispersion coefficient	λ0mín	
	λ0máx	
	S0máx	
PMD coefficient (Polarization Mode Dispersion)	Máximo: 0,20 ps/√ km	
Chromatic dispersion	@ 1288 ~ 1339 nm	≤ 3.5 ps/(nm. km)
	@ 1271 ~ 1360 nm	≤ 5.3 ps/(nm. km)
	@ 1550 nm	≤ 18 ps/(nm. km)
	@ 1625 nm	≤ 22 ps/(nm. km)
Zero-dispersion wavelength	1300 ~ 1324 nm	
Zero-dispersion slope	≤0.092 ps/(nm ² .km)	
Immersion in water, 23 °C ± 2 °C (at 1310 nm, 1550 nm and 1625 nm)	≤ 0,05 dB/km	
Accelerated aging (heat aging), 85 °C ± 2 °C (at 1310 nm, 1550 nm y 1625 nm)	≤ 0,05 dB/km	

(*1) The Constructed Cable Loss In A Reel May Be Higher Than The Fiber Loss



OCCMGY-09G652XXSJ-IN

SINGLE SHEATH, DUCT, MULTI LOOSE TUBE OPTICAL CABLE

TECHNICAL PROPERTIES

Fiber Type	G652D - OS2	
External covering material	HDPE	
Outer jacket color	Black	
Peripheral Strength Member	Glass Yarn	
Jacket protection	UV resistant	
Internal cable structure - Loose tube	OCCMGY-09G652006-SJ-IN	(1 buffer with 6 yarn)
	OCCMGY-09G652012-SJ-IN	(1 buffer with 12 yarn)
	OCCMGY-09G652024-SJ-IN	(2 buffer with 12 yarn)
	OCCMGY-09G652048-SJ-IN	(4 buffer with 12 yarn)
	OCCMGY-09G652096-SJ-IN	(8 buffer with 12 yarn)
	OCCMGY-09G652144-SJ-IN	(12 buffer with 12 yarn)
Central member structure	fiberglass-reinforced plastic (FRP).	
Configuration of the internal cable structure	SZ Braided, Thermoplastic Cylinders	
Estructura de los tubos	Material	PTB
	Diameter ($\pm 0.05\text{mm}$)	2.1mm
	Thickness ($\pm 0.03\text{mm}$)	0.35mm
Tube filling compound	Dry Element (WS Yarn)	
Ripcord	2 Nos. below armour	
Water Blocking Material	Core wrapping	Water blocking tape
	Water blocking media	Water Swellable Yarn Over CSM
Color code	TIA 598 D Standard	
Repeated bending IEC 60794-1-2-E6	25 Cycle, $r = 20 \times D$, 5 Kg, D = Cable Diameter	
Bending radius IEC 60794-1-E11	During Installation	$20 \times D$, D = Cable Diameter
	During Operation	$15 \times D$, D = Cable Diameter
Diámetro exterior del cable(cable OD)	6F-24F	$11 \pm 5\text{mm}$
	48F	$11 \pm 5\text{mm}$
	96F	$13.5 \pm 5\text{mm}$
	144F	$15.5 \pm 5\text{mm}$
Drum length x Km	2Km/4 Km $\pm 5\%$	
Cable weight cable weight (kg / km)	6F-24F	Máximo: 85 kg/km
	48F	Máximo: 80 kg/km
	96F	Máximo: 125 kg/km
	144F	Máximo: 190 kg/km
Tensile strength IEC 60794-1-2-E1	Short Term	2700 N
	Long Term	1600 N
Torsion Resistance IEC 60794-1-E7	10 Cycle ($\pm 180^\circ$) with 100N weight, L= 2Mtr	
Crush Resistance IEC 60794-1-E3	Short term	4000 N/10Cm
	Long term	2000 N/10Cm
Temperature range (IEC 60794-1-F1)	Operation	-40° to $+70^\circ\text{C}$
	Installed	-20°C to $+70^\circ\text{C}$
	Storage and Shipping	-40° to $+75^\circ\text{C}$



OCCMGY-09G652XXXSJ-IN

SINGLE SHEATH, DUCT, MULTI LOOSE TUBE OPTICAL CABLE

TECHNICAL PROPERTIES

Cable breaking strength(RTS)	6F-24F	9.0KN
	48F	9.4KN
	96F	10.2KN
	144F	11.4KN
Impact strength IEC 60794-1-2-E4	4.4 Nm	
Working Tension (MAT)	6F-24F	3.6KN
	48F	3.8KN
	96F	4.1KN
	144F	4.5KN
Water Penetration IEC 60794-1-F5	1 Mtr Water Head, 3 Meter Cable Sample, 24 Hours	
Color of tubes - Standard Tia 598C	Blue, Orange, Green, Brown, Slate, White, Red, Black, Yellow, Violet, Rose (Pink), Aqua	

Cable Physical Characteristics

Fibre Count	12	24	48	96	144
Number of Fibres in each Loose Tube	12				
Number of Loose Tube in each cable	1	2	4	8	12
Number of Filler (if Required)	4	3	1	0	0
Number of layer of SZ stranded	1				
Cable Diameter (mm)	11.0		13.5		16.5
Tolerance ± (mm)	0.5				
Nominal Cable Weight (kg/km)	85		125		190
Standard Length (meters)	4000 ± 5%				2000 ± 5%

Identification Fiber & Loose Tube Color

Fiber Color												
Loose Tube Color												
Color of filler	Black											

(*1) The constructed Cable Loss May Be Higher Than Fiber loss

APPLICATIONS

FTTH access network / Telecommunication Networks / CATV Networks / Data communications Networks / Local Area Networks



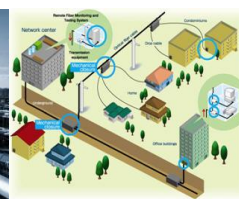
STREET



HOSPITAL



INDUSTRIES



FTTH



OTHERS