

### DESCRIPTION

Outdoor Wall-mount Fiber Optic Distribution Frame is mainly used for connecting the outdoor optical cables, optical patch cords and optical pigtails. It can be wall mounted or pole mounted, and facilitates the test and refit of the lines..

With steel plates can manage both single fiber and ribbon & bundle fiber cables FC, LC, SC, ST output interfaces optional Mini size with reasonable working space to integrate the pigtail, cables and adapters

Made of cold-rolling steel, static spreading-plastic, small dimension and exquisite, easy for operation

Special design ensures the excess fiber cords and pigtails in good order



Fiber Quantity	Dimension(cm)	Weight(Kg)
24	39x33x8cm	5.3

### APPLICATIONS



STREET



HOSPITAL



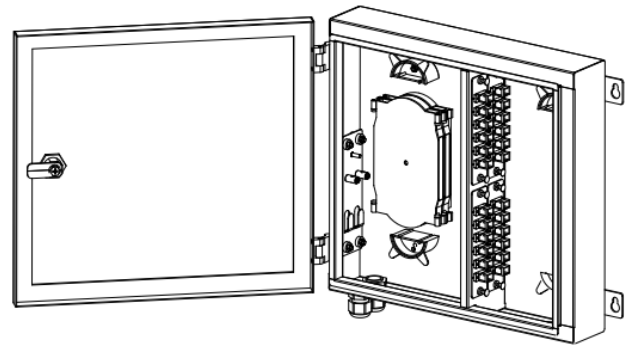
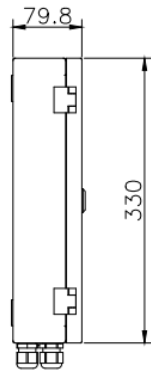
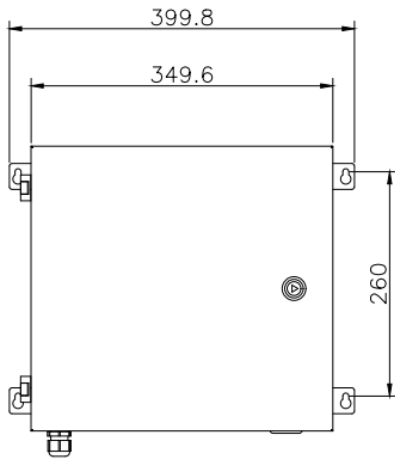
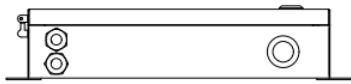
INDUSTRIES



FTTH



OTHERS



## APPLICATIONS



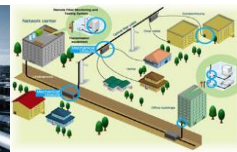
STREET



HOSPITAL



INDUSTRIES



FTTH



OTHERS