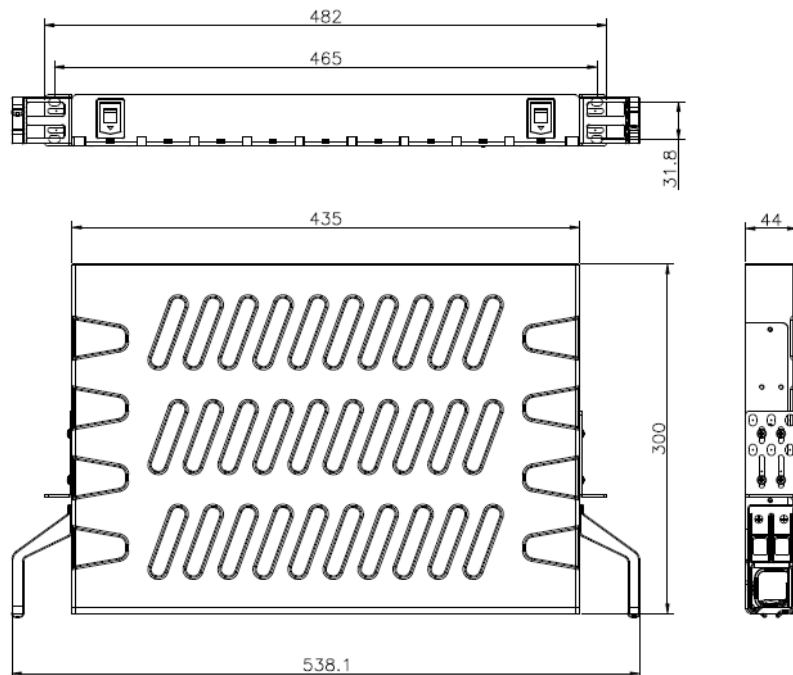
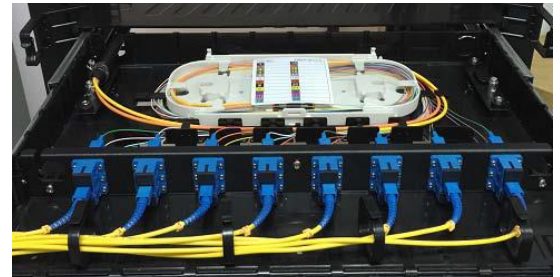
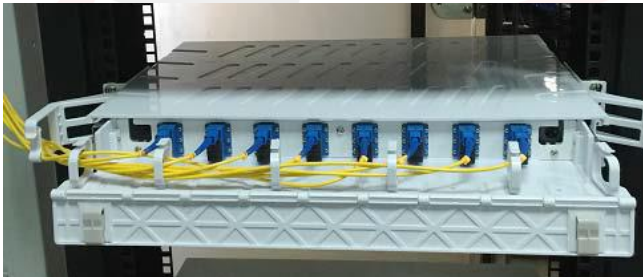
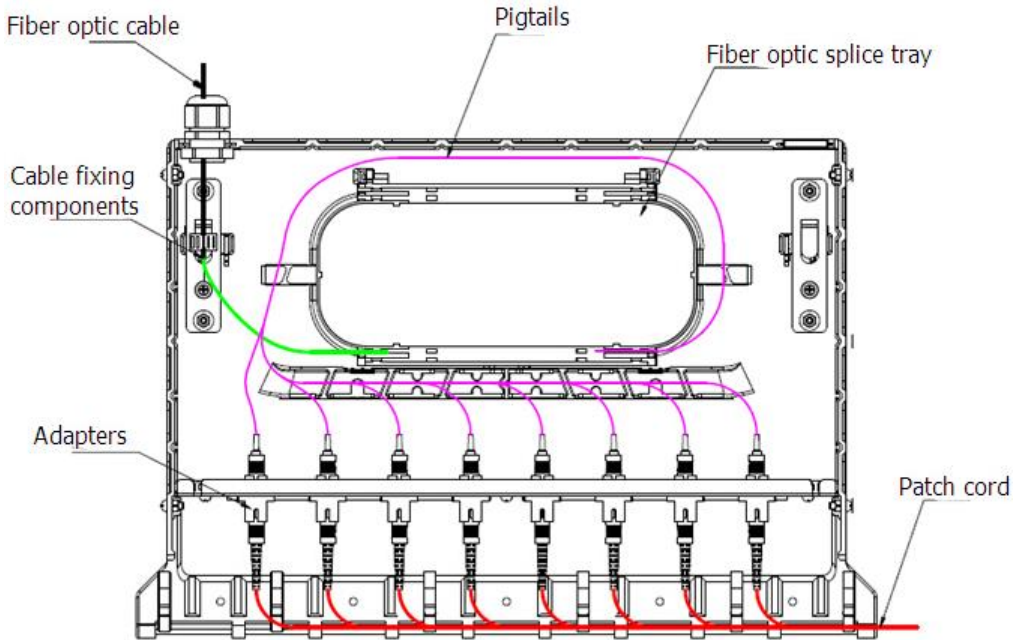


Our Optical Patch Panel is developed in high engineering plastic (ABS Plastic), which is very resistant to impacts and chemical elements; Due to this characteristic, the product is light, compact, durable, attractive, easy to install and handle, it has a sliding tray that provides optimal organization and good storage of the fiber optic splices inside.

Features:

- Maximum capacity 24 SC simplex adapters or 24 LC duplex adapters
- Special sliding design, operation easy and convenient
- Material is ABS plastic, light weight Black or white optional.
- Max. capacity of splice tray: 1 Pc By 24 fibers
- Application: 19inch rack mounted
- Size in rack unit: 1UR
- Dimension(mm): 435X300X44





APPLICATIONS

FTTH access network / Telecommunication Networks / CATV Networks / Data communications Networks / Local Area Networks



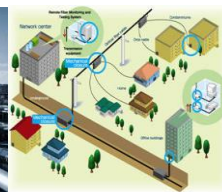
STREET



HOSPITAL



INDUSTRIES



FTTH



OTHERS