



Where XX = Length

XX = 01 - 01 feet

XX = 02 - 02 feet

XX = 03 - 03 feet

XX = 05 - 05 feet

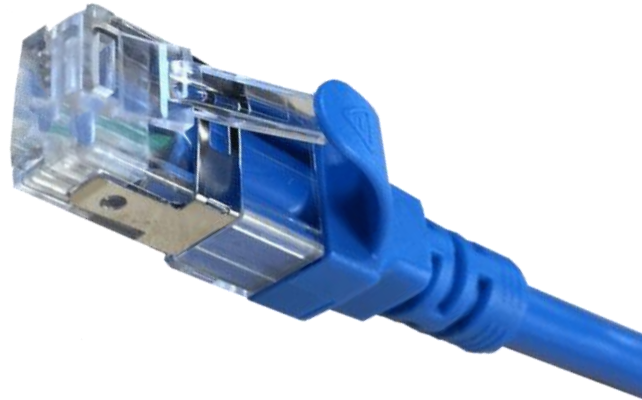
XX = 07 - 07 feet

XX = 10 - 10 feet

Y=COLOR

Y=B- Blue

Y=W- White



Specification

Material

1. RJ45 Plug

1.1. Housing: Polycarbonate, UL 94V-2, transparent color

1.2. Contact Material : Phosphor Bronze with 50-60 micro inch nickel plated.

1.3. Contact Finish : Min. 50 micro-inch gold plated on surface contact area.

1.4. Shield : Bronze with Nickel plated.

2. Molding : PP-3015 Boot.

3. Cable :

3.1. Jacket : PVC- CM

3.2. Conductor : 26 AWG Stranded Copper.

3.3. Isolation : PE

3.4. Shield : Aluminum Foil Shielded for each Pair, Thin Copper Braid.

4. Cable Structure: U/UTP, 4 twisted pair with Cross Bar.